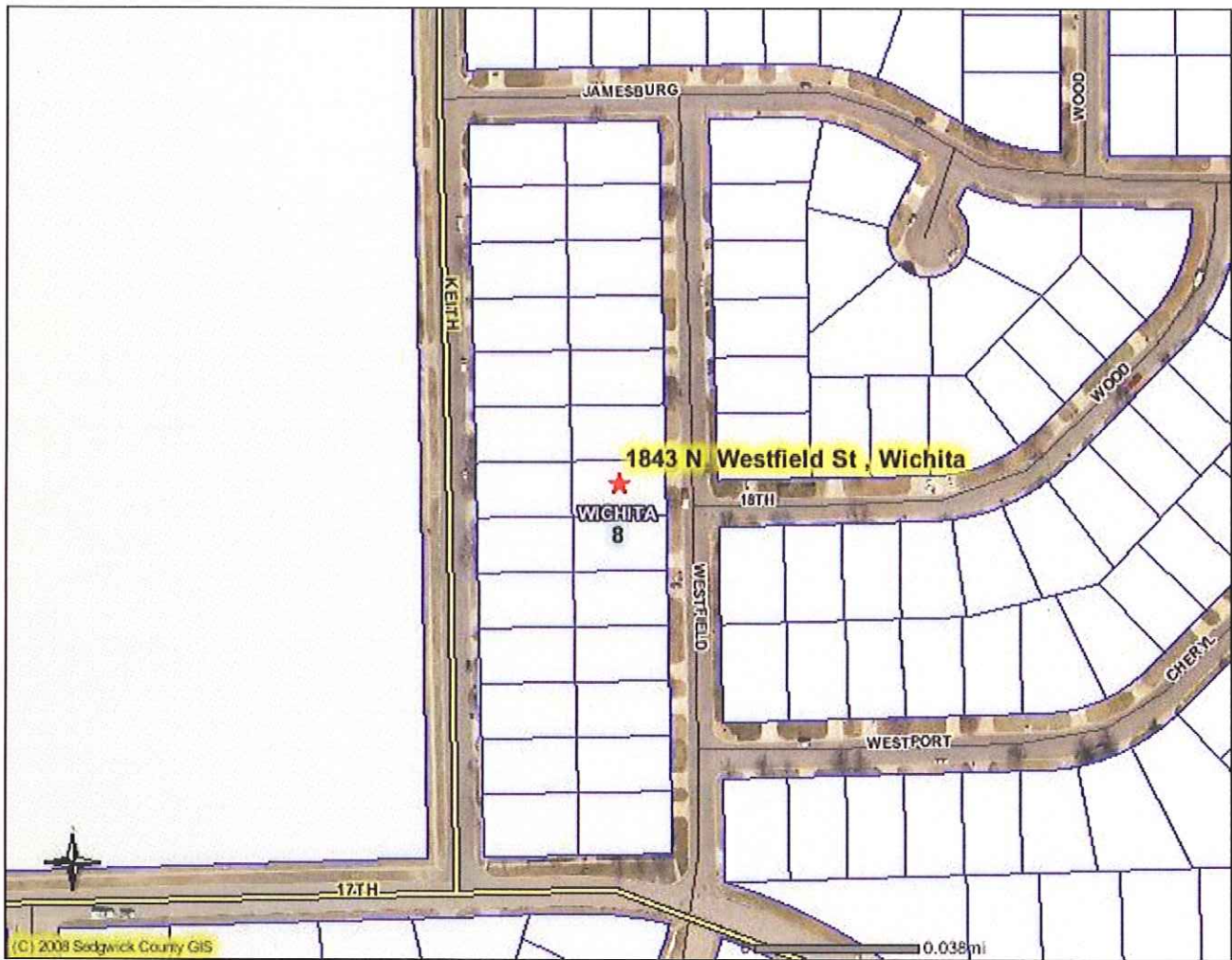


Sedgwick County Maps



(C) 2008 Sedgwick County GIS

Legend

Historic Site Buffers		Zoning Districts	
	1000' National Historic Site Buffers		Rural Residential
	500' Local Historic Site Buffers		Single Family 20,000
	Historic Districts		Single Family 10,000
	Nationally Registered Historic Sites		Single Family 5,000
	Locally Registered Historic Sites		Two-Family
	Special Use Cases		Multi-Family 18 d.u./ac
			Multi-Family 29 d.u./ac
			Multi-Family 75 d.u./ac
			Manufactured Housing
			Neighborhood Office
			General Office
			Neighborhood Retail
			Limited Commercial
			Office Warehouse
			General Commercial
			Industrial Park
			Industrial Park - Airport
			Central Business District
			Limited Industrial
			General Industrial
			University
			Planned Unit Development
			Air Force Base
			Unknown
			Not Zoned



Geographic Information Services
 Division of Information & Operations
www.sedgwickcounty.org/gis
 525 N. Main, Suite 212, Wichita, KS 67203
 Tel: 316.660.9290 Fax: 316.262.1174

DISCLAIMER: It is understood that, while Sedgwick County Geographic Information Services (SCGIS), City of Wichita GIS, (for purposes of the road centerline file), participating agencies, and information suppliers, have no indication or reason to believe that there are inaccuracies in information provided, SCGIS, its suppliers make no representations or warranties of any kind, including, but not limited to, warranties of merchantability or fitness for a particular use, nor any such warranties to be implied with respect to the information, data or service furnished herein. In no event shall the Data Providers become liable to users of these data, or any other party, for any loss or damages, consequential or otherwise, including but not limited to time, money, or goodwill, arising from the use, operation or modification of the data. In using these data, users further agree to indemnify, defend, and hold harmless the Data Providers for any and all liability of any nature arising out of or resulting from the lack of accuracy or completeness of the data, or the use of the data. No person shall sell, give or receive for the purpose of selling or offering for sale, any portion of the information provided herein.