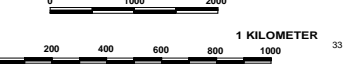


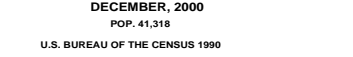
TRAFFIC COUNT
MAP OF
MANHATTAN
RILEY COUNTY KANSAS

COMPILED AND GENERATED BY THE
KANSAS DEPARTMENT OF TRANSPORTATION
BUREAU OF TRANSPORTATION PLANNING
 IN COOPERATION WITH THE
U.S. DEPARTMENT OF TRANSPORTATION
FEDERAL HIGHWAY ADMINISTRATION

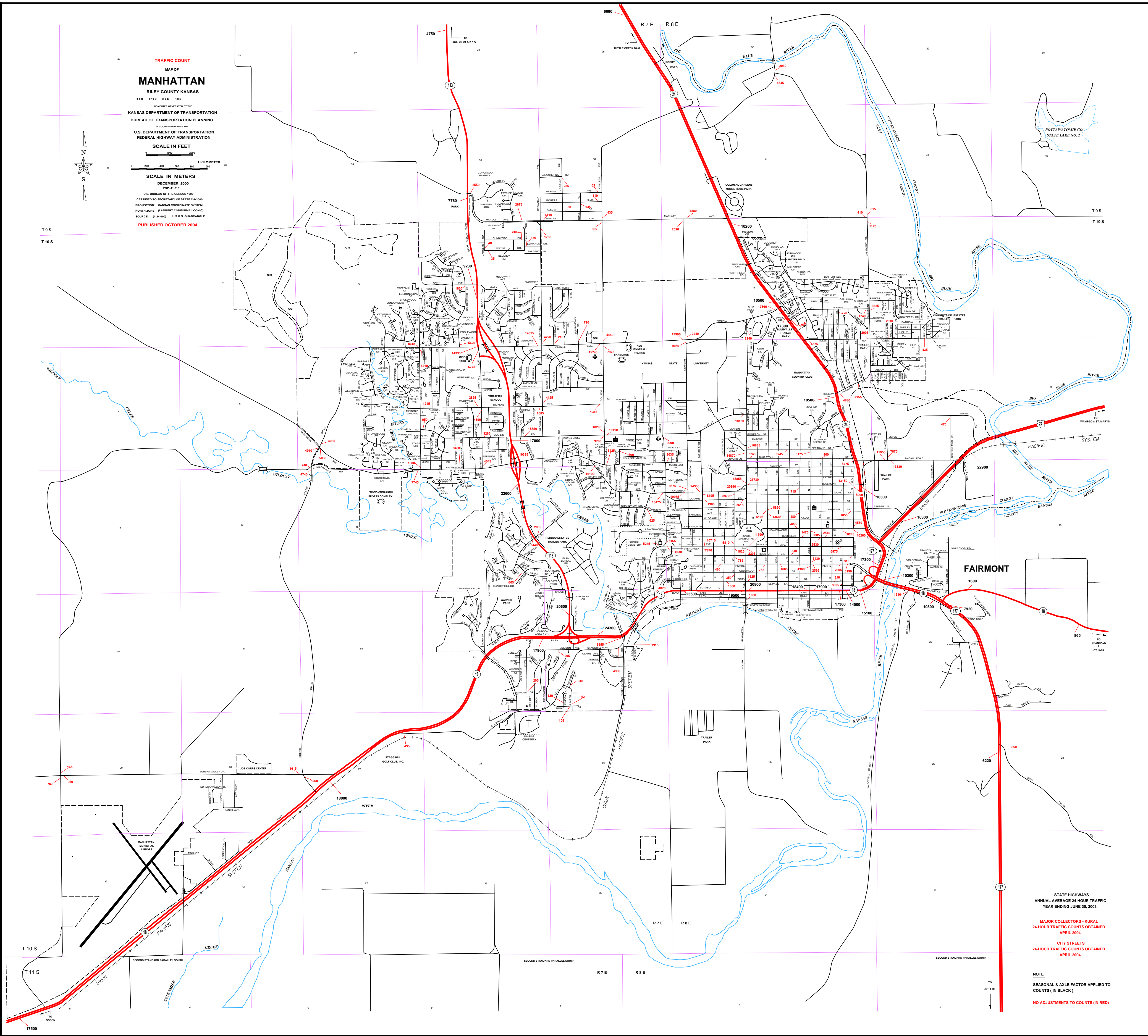
SCALE IN FEET



SCALE IN METERS



DECEMBER, 2000
 POP. 43,315
 U.S. BUREAU OF THE CENSUS 1990
 CERTIFIED TO SECRETARY OF STATE 7-1-2000
 PROJECTION: KANSAS COORDINATE SYSTEM,
 NORTH ZONE: (LAMBERT CONFORMAL CONIC)
 SOURCE: 1:25,000 U.S.G.S. QUADRANGLE
PUBLISHED OCTOBER 2004



STATE HIGHWAYS
 ANNUAL AVERAGE 24-HOUR TRAFFIC
 YEAR ENDING JUNE 30, 2003

MAJOR COLLECTORS - RURAL
 24-HOUR TRAFFIC COUNTS OBTAINED
 APRIL 2004

CITY STREETS
 24-HOUR TRAFFIC COUNTS OBTAINED
 APRIL 2004

NOTE
 SEASONAL & AXLE FACTOR APPLIED TO
 COUNTS (IN BLACK)
NO ADJUSTMENTS TO COUNTS (IN RED)